



GMW
GOLDEN MY WAY

HEAVY MACHINE
PARTS AND ACCESSORIES
茂旺汽車材料有限公司



Professional *Heavy machine parts and accessories*

專業重機械零配件 製造.維修.訂製

Index

Gear & Gear Assy Series

齒輪 & 齒輪組系列 01 - 04

Shaft Series

齒軸系列 05 - 06

Gear Sleeve.Coupling.Gear Disc of Connector Series

接頭.齒盤.齒環.其它系列 07

Hydraulic-Cylinder Series

油壓缸系列 08 - 09

Stacker Roller Bearing & Parts Series

堆高機軸承及配件系列 10 - 11

Pulley and Pusher Series

皮帶盤.銅柱塞 (子彈頭)系列 12

Push-Pull Control Cable Series

推拉導線系列 13 - 14

Track Adjuster Series

履帶調整管系列 15

Customization Product

客製化產品 16 - 17

Repair, Maintaining

整修.保養 18 - 19



茂旺汽車材料有限公司創立於1981年，初期以經營汽車材料買賣為主，隨著台灣經濟快速的發展，在董事長洪瑞達先生的帶領下，自原本的材料行，轉型為專業生產建設機械、產業機械之零配件製造、研發修復公司；提供最快速一貫化整合服務。

茂旺一直以來，秉持著專業、誠信、創新、品質、效率、服務、責任、務實的精神不斷求新求變，提供客戶各式重機械領域之高品質產品，以及專業解決方案。多年來，除了積極擴展業務服務範圍之外，工廠內部也持續精進添購新型機具及設備，以提供客戶各種專業重機械產品研發改良及創新設計。另外，我們更著重內部加強員工教育訓練，且持續不間斷吸收相關專業知識、以及學習新領域專業技術來提升產品品質及競爭力，得以和國內、外數千餘客戶共同成長、茁壯。

Golden My Way (GMW) Co., Ltd. was established in 1981. The founder started the business from scratch by only selling machine parts; with the growth of industry in Taiwan, then we transformed our business type to a factory to manufacture, research, and develop our own heavy machine parts.

Based on Professionalism, Integrity, Innovation, Quality, Efficiency, Service, Responsibility as well as Pragmatism, GMW keeps changing in innovation to provide customers with best quality of products and professional solutions. Not only do we keep doing active factory expansion and purchasing new equipment and machines, but we also continuously learn relative knowledge and new skills to improve the quality and competitive abilities. Up to now, GMW has obtained over thousands of customers at home and abroad.

專業 誠信 創新 品質 效率 服務 責任 務實
www.goldenmyway.com.tw



Services Include

Our Services Include

服務項目



【服務項目涵蓋】

挖土機、堆高機、橋式跨載機（門式機）零件、貨櫃廠重櫃、空櫃機零件，垃圾車零件、鏟土機、小山貓、建設機械零件、套管機械、基樁機械、吊車及基礎工程機械零件、隧道開鑿工程機械零件、船艇零件、巴士零件...等領域

Our Services Include

Excavator parts, Forklift parts, Travelift parts, Heavy Cabinet parts, Garbage Truck parts, Bulldozer parts, Construction Machine parts, Pile-Driver parts, Foundation Engineering Machine parts, Drilling and Tunneling Machine parts, Shake Tube Machine parts, Ship parts, Bus parts, etc.

- 重機械零件訂製、買賣
Trade and manufacture products of heavy machine parts.
- 特殊重機械零件訂製、維修
Customize special heavy machine parts.
- 重機械零件修理、改良
Repair and improve heavy machine parts.
(如：油壓缸、行走齒包、旋轉齒包、旋轉大軸承)
(EX:Hydraulic Cylinder, Travel Gear Assy, Swing Gear Assy, Swing Bearing)
- 客製化商品及服務
Customize your requests



Gear
Gear Series

齒輪系列

Gear Series 齒輪系列



PLANETARY GEAR

行走齒包行星齒輪



產品範圍(Product Range)

內徑(Internal Diameter)	> 10mm
外徑(Outer Diameter)	<2500mm
長度(Length)	<1500mm
模數(Module)	m1~m16

SUN GEAR

行走齒包行星齒輪之中間傳動齒輪



SWING MOTOR DRIVE GEAR

旋轉減速馬達傳動齒輪



MAIN PUMP GEAR

總泵浦齒輪



SWING DECELERATION GEAR

旋轉減速齒輪



TRAVELIFT - TRANSMISSION

GEAR / BRAKE GEAR

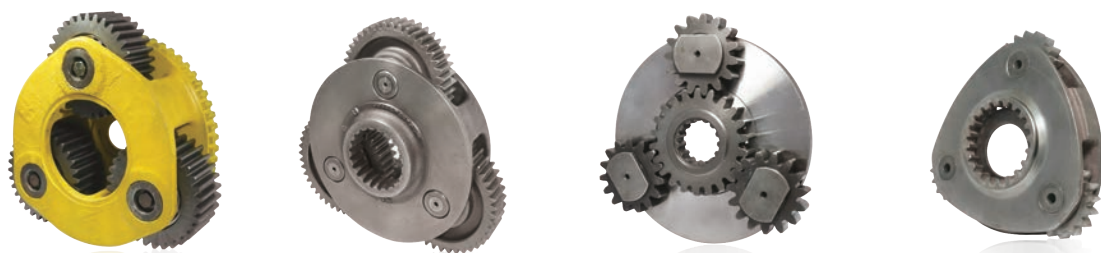
橋式跨載機齒輪



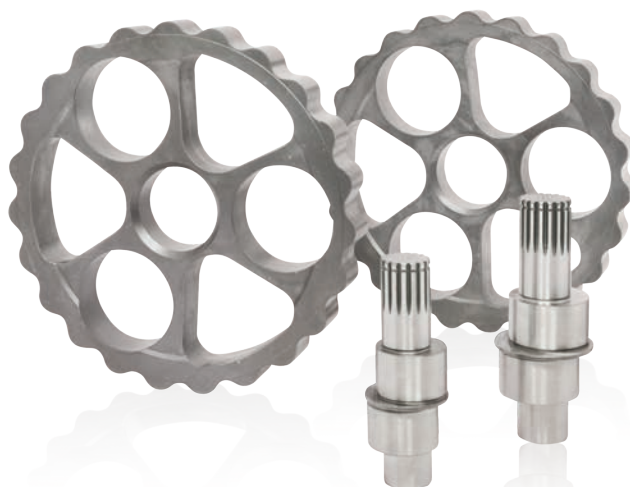
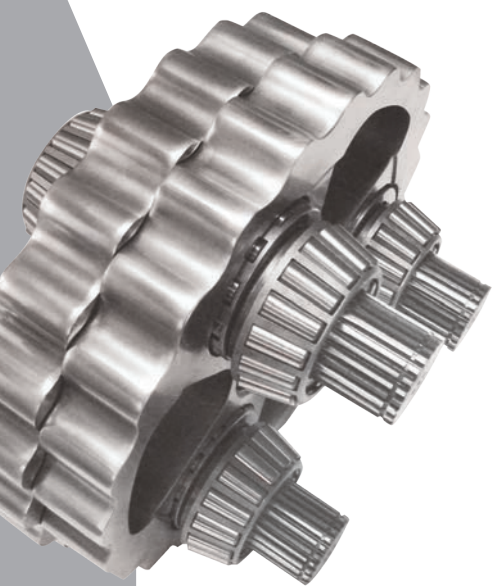
Gear Assy Series 齒輪組系列

DECELERATION GEAR ASSY

減速齒輪組



Travel Gear Assy 行走齒包減速齒輪組



RV Gear & Eccentric Shaft 行走齒包梅花齒盤&偏心齒軸



Eccentric Gear Assy 行走齒包偏心齒輪組



Eccentric Shaft 行走齒包偏心齒軸



Shaft

Shaft Series

齒軸系列

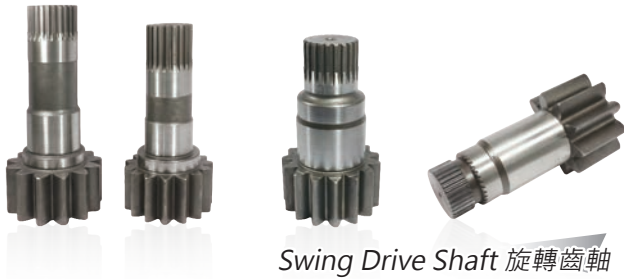
Gear Sleeve & Coupling & Gear Disc of Connector

Gear Disc of Connector 接頭.齒盤.齒環.其它系列

Shaft Series 齒軸系列

SWING SHAFT / PINION

旋轉齒軸



Swing Drive Shaft 旋轉齒軸



Swing Deceleration Shaft
旋轉減速齒軸



Swing Drive Shaft
旋轉傳動齒軸

TRAVEL DECELERATION DRIVE SHAFT

TRAVEL MOTOR SHAFT

行走齒包減速傳動齒軸 / 馬達齒軸



DOUBLE HEAD DRIVE SHAFT

油壓馬達雙頭齒傳動齒軸



TRAVELIFT - TRANSMISSION SHAFT

BRAKE ASSY SHAFT

PUMP SHAFT

橋式跨載機齒軸



Gear Sleeve & Coupling

Gear Disc of Connector

接頭.齒盤.齒環.其它系列

GEAR SLEEVE / COUPLING

GEAR DISC OF CONNECTOR

傳動齒套、接頭、齒盤



Gear Disc of Connector
總泵浦傳動齒盤



Copper Coupling
破碎機牙形銅接頭



Coupling 泵浦傳動接頭



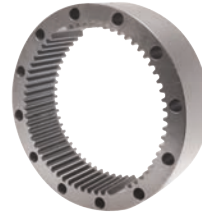
Coupling 總泵浦傳動接頭



Gear Sleeve 行走齒包傳動齒套

INTERNAL RING GEAR

行走齒包內齒環

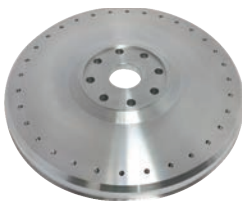


RING GEAR

FLY WHEEL

FLY WHEEL BACKING / PLATE

堆高機電木齒、壓板、飛輪齒、飛輪盤



Fly Wheel 飛輪盤



Ring Gear Backing / Plate 電木齒壓板



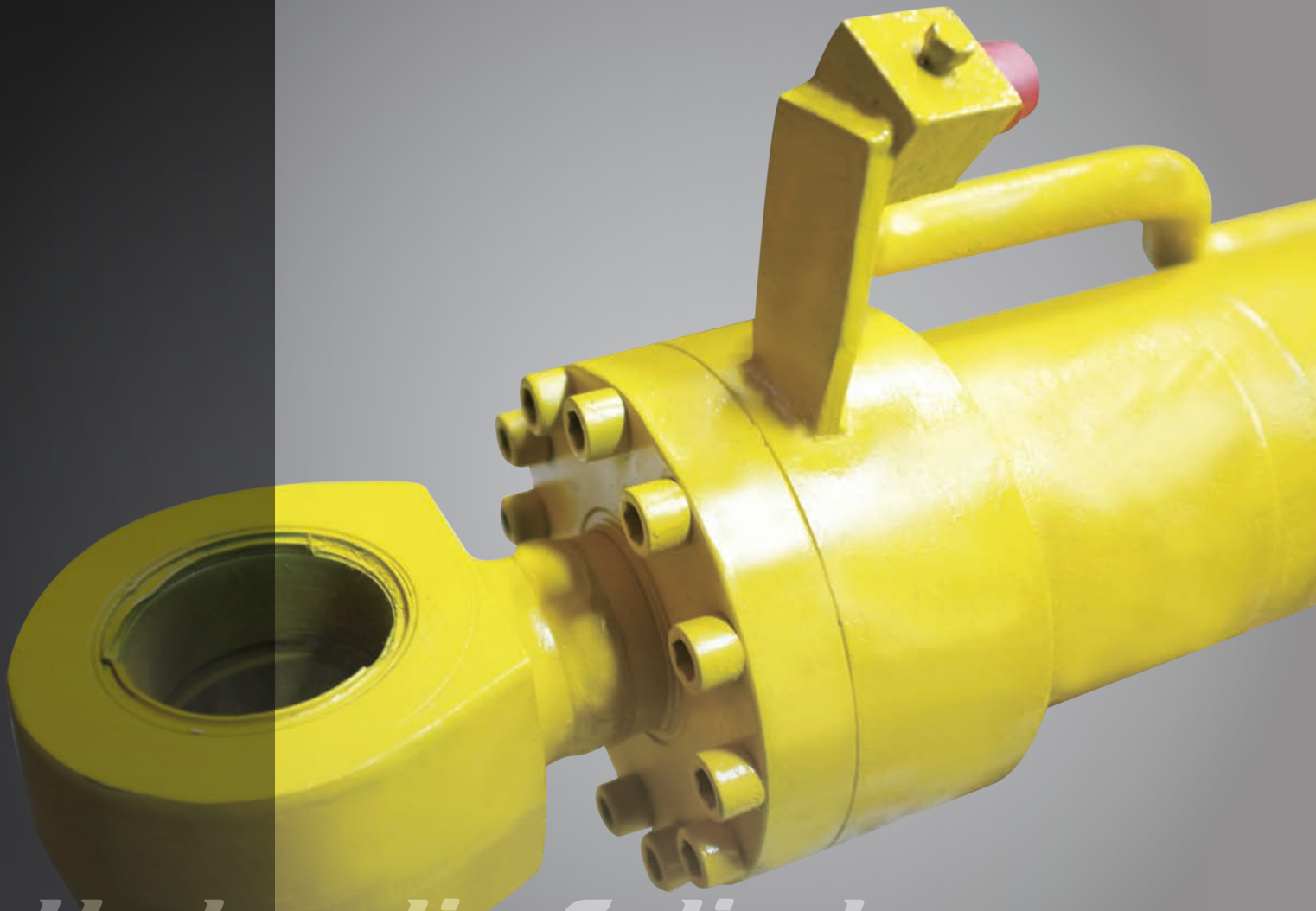
Ring Gear 飛輪齒



Ring Gear 電木齒



Ring Gear 塑鋼電木齒



Hydraulic-Cylinder

Hydraulic-Cylinder Series

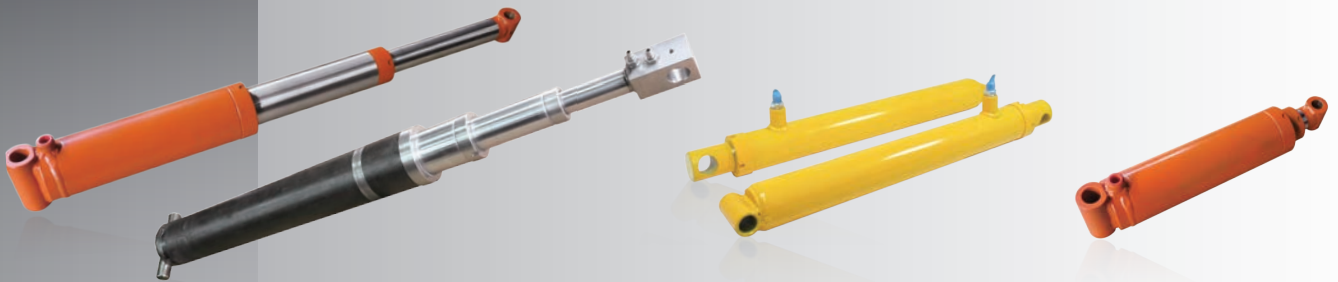
油壓缸系列

ONE WAY LINEAR & TELESCOPIC HYDRAULIC CYLINDER

單向油壓缸 / 多節式油壓缸

產品範圍 (Product Range)

油壓缸孔徑	8φmm~1000φmm
油壓缸伸縮長度	10 mm~15000 mm
Inner diameter	8φmm~1000φmm
Total length	10 mm~15000 mm



TWO WAY LINEAR HYDRAULIC CYLINDER

雙向油壓缸

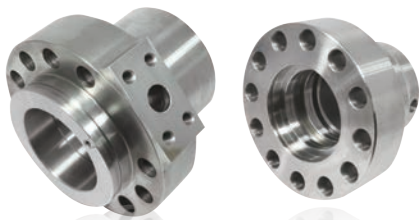


LINEAR HYDRAULIC CYLINDER PARTS

油壓缸配件



Piston 活塞



Head 帽頭



Piston Rod 油壓軸心



*Bearing
& Pulley & Pusher*
Stacker Roller Bearing & Parts Series
堆高機軸承及配件系列

本公司產品以重機械用滾動軸承為主，已有20多年經驗，使用一體成形鋼材及特殊熱處理方式，使其有極佳的耐用性。

Our company mainly provides roller bearings for big forklift use.

With **Integrally Formed Steel and Special Heat Treatment**

and more than two decades of experience that make products have excellent durability.

Stacker Roller Bearing and Parts Series

堆高機軸承及其配件系列

ROLLER BEARING

H TYPE ROLLER BEARING

大型升降軸承

堆高機H型升降軸承



SHAFT / STUB BEARING CAP

軸承座 / 軸承蓋



ROLLER ASSEMBLY, SIDE

升降連座邊軸承



Pulley and Pusher Series

皮帶盤及銅柱塞(子彈頭)系列

CRANK SHAFT PULLEY

曲軸皮帶盤



FAN PULLEY

風扇皮帶盤



PUSHER

銅柱塞(子彈頭)





Cable

Push-Pull Control Cable Series

推拉導線系列

本公司採用進口的日本鋼索原料，並提供以重機械為主的各式
推拉導線的成品及訂製品，此外也提供小量特殊規格訂製

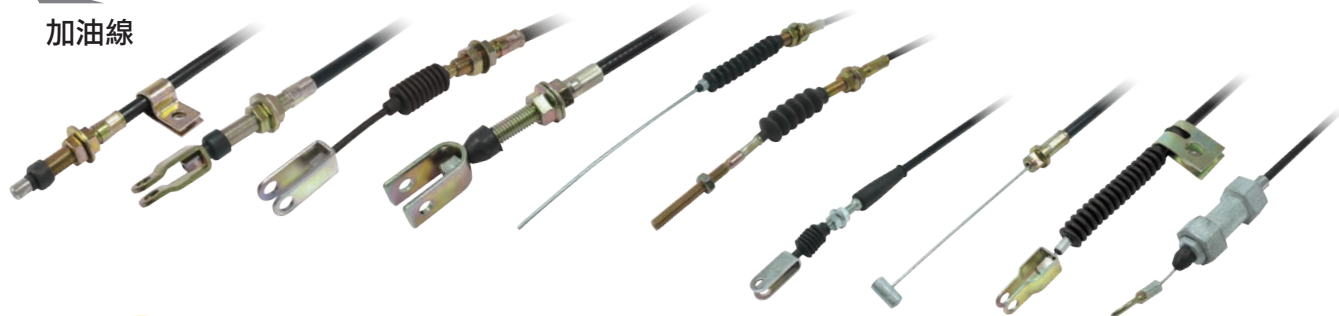
Our company uses the imported **Japanese steel cables** and provides all kinds of cables for heavy machine use. Also, we accept small amount of customizing order.

Push-Pull Control Cable Series

推拉導線系列

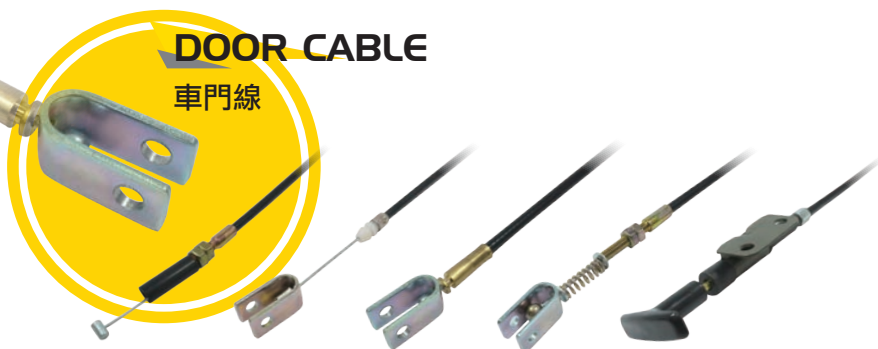
ACCELERATOR CABLE

加油線



DOOR CABLE

車門線



SEAT CABLE

座椅拉線



BRAKE CABLE

剎車線



SHIFT CABLE

排檔線



CLUTCH CABLE

離合器線



CHOKE CABLE

熄火線



LINING ADJUST CABLE

來令片調整線



Pull-Push Control Cable's Parts
推拉導線配件



Track Adjuster 履帶調整管系列

產品範圍(Product Range)	
管外徑	55mmØ~148mmØ
管長度	100 mm~885 mm
Outer diameter	55mmØ~148mmØ
Total length	100 mm~885 mm



Order

Customization Product

依照您的需求製造 客製化產品



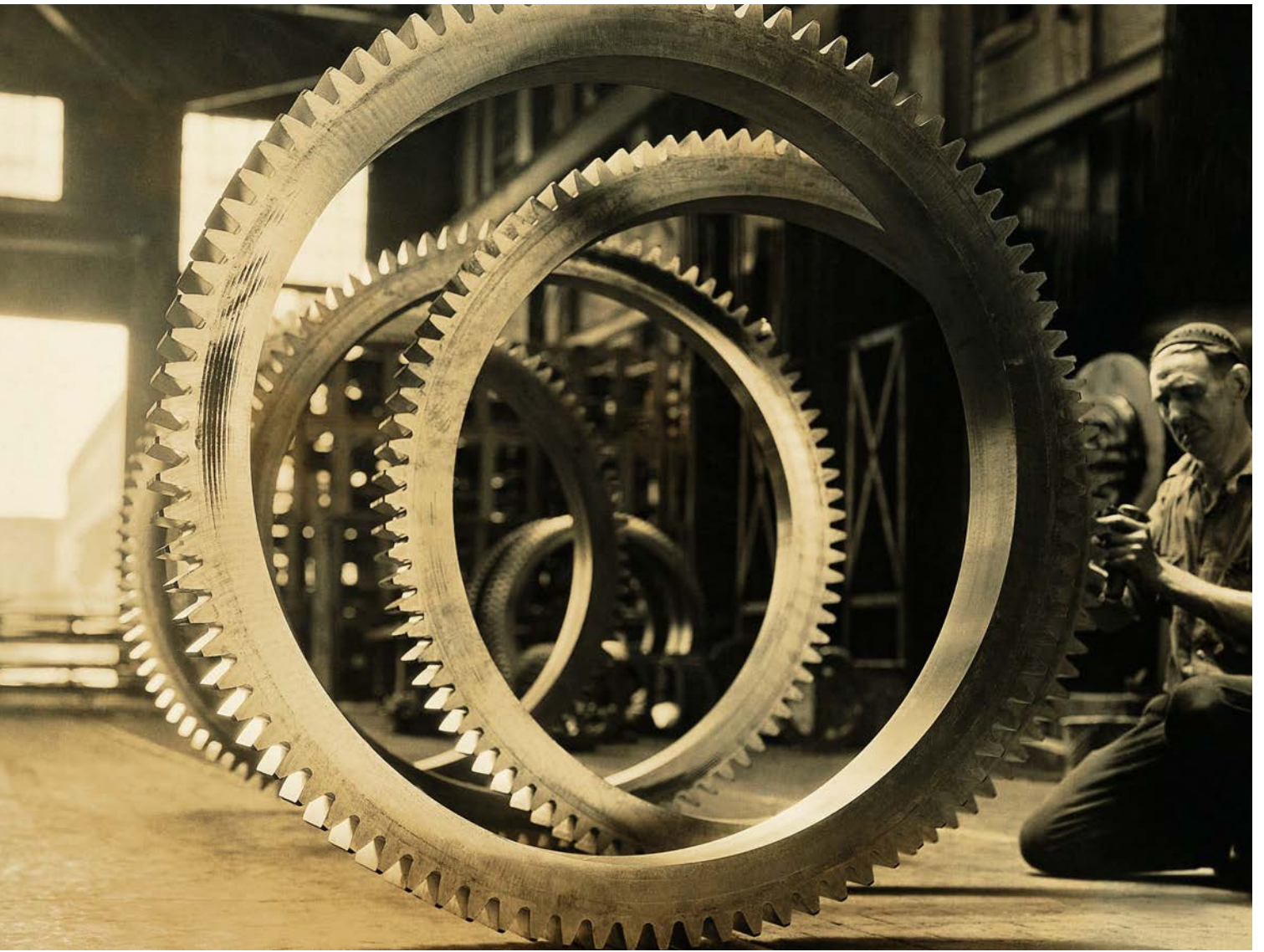
Crank shaft 曲軸

從我們接到訂單開始，提供原料揀選服務，再依客戶需求提供如車床、銑床、鏡面研磨(10mm~380mm)、弧型研磨...等加工服務，並在出貨前反覆檢驗成品，層層為您做品質的把關，為您提供完善及嚴格的产品生產製造流程，在訂單方面接受各產品特殊規格訂製及特殊品訂製

- 接受少量訂單
- 提供選材建議

From receiving an order, selecting a material to processing it (Lathe processing, milling machine processing, Mirror grinding processing (10mm~380mm), Arc grinding processing, etc.), we provide the best services you need. We also double check quality of products before shipping to make sure the product is in its best condition.

- **Accept small amount order**
- **Provide material suggestion**



Auto Transmission Clutch Lining(Copper)
自動變速箱離合器銅片



Auto Transmission Clutch lining / Plate(Steel)
自動變速箱離合器鋼片 / 壓板



Driving disc 九葉傳動片



Pulley 皮帶盤



Copper Bush 升降架銅波司

Accept small amount order
Provide material suggestion



Chain Screw 鍊條螺絲



Spreader Lock 貨櫃車吊架鎖頭

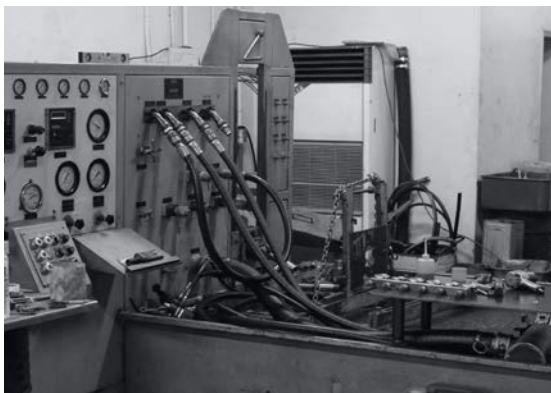


Auto Transmission Plate Pressure
自動變速箱壓板



Repair, Maintaining

整修 · 保養



Examine Service Accept Exchange Provide Warranty

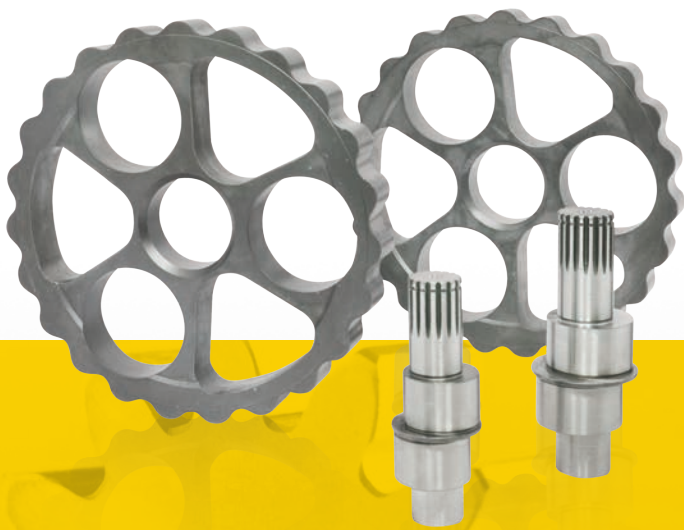
From examining the problem till final test, we provide rigorous repairing processes. Also, with "Self-Manufactured Parts" and "Strict Examine Procedure by using (Hydraulic Testing Machine)" all products can be tuned to its best condition which substantially increases your products' lifetime.

檢測服務 接受對換 提供保固

從找出問題至維修後的产品檢測，提供最嚴格的檢修流程，並因自產零件及廠內檢測機制能將維修品調教至最佳狀態，故能大幅度的提高您產品壽命。

提供服務含各式重機械零件，如：水邦浦、油(液壓)邦浦、齒包、大小旋轉齒盤 (~2800mm)、油壓缸、吊車旋轉齒盤整修等。

<p>檢查 <i>Examine</i></p>	<p>檢查物品損壞部份 Examine damaged parts.</p>	
<p>修理 <i>Repair</i></p>	<p>針對損壞部位進行修理 Repair damaged parts.</p>	
<p>檢測 <i>Test</i></p>	<p>修復後對修復品進行檢測，確保其運作正常 Testing repaired parts to make sure it works in its best condition.</p>	



If you need more details of our products, Please contact us or check out our official website.

若想知道更多的產品資訊 可上本公司官網查詢



搜尋

Golden My Way





 **茂旺汽車材料有限公司**
GOLDEN MY WAY CO., LTD.

新莊公司 Xinzhuang

242新北市新莊區復興路三段81號
No.81, Section 3, Fuxing Rd., Xinzhuang Dist.,
New Taipei City 242, Taiwan, R.O.C.
TEL: 886-2-8991-7746 FAX: 886-2-2998-1209

台北公司 Taipei

103台北市大同區承德路二段75巷25號
No. 25, Ln.75, Sec.2, Chengde Rd., Datong Dist.,
Taipei City 103, Taiwan, R.O.C.
TEL: 886-2-2559-3297 FAX: 886-2-2558-6393